

# Speed & Environment

Bram Claeys

ShLOW Camp, 4/5/2009, Brussels

Bond Beter Leefmilieu



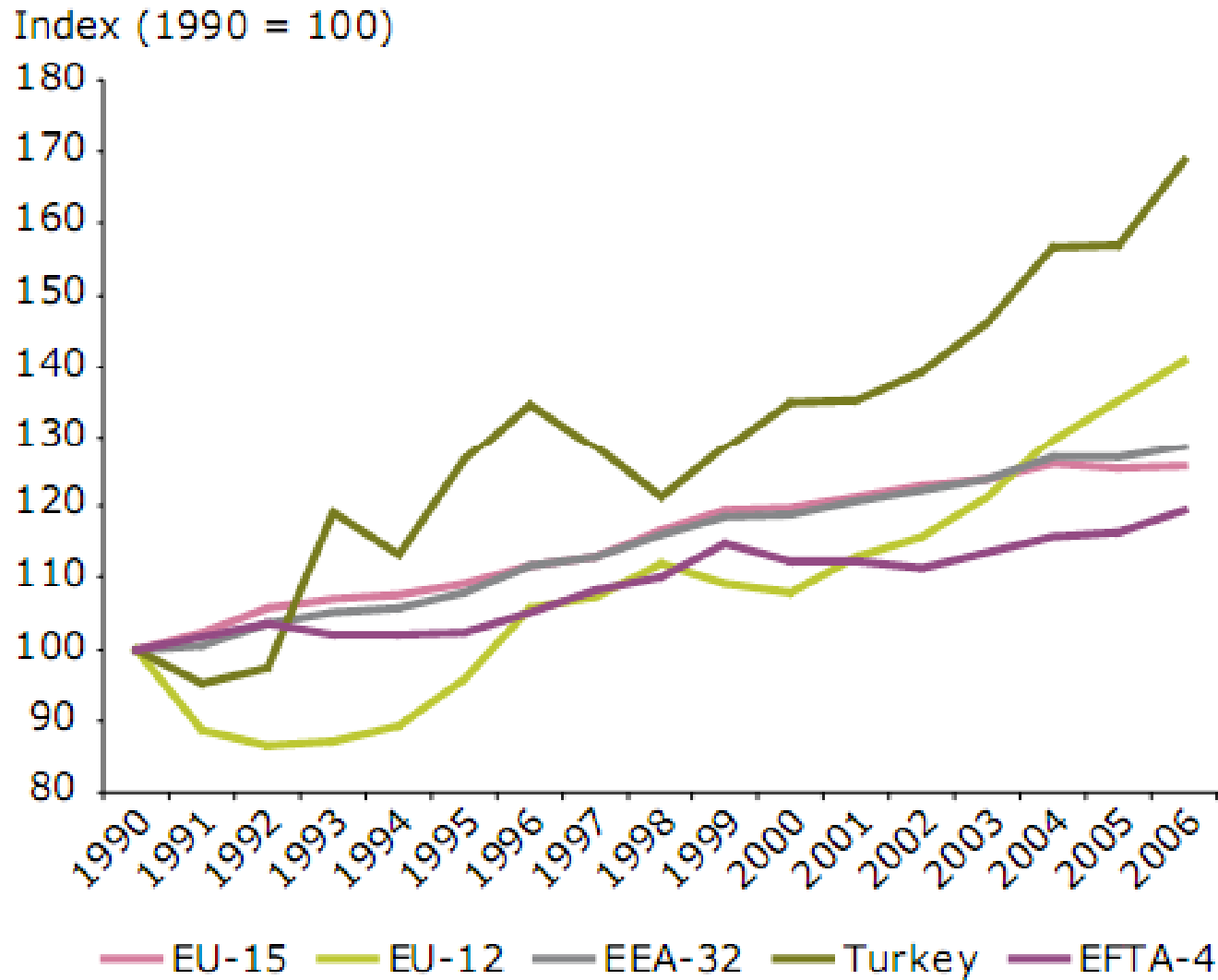


# Bond Beter Leefmilieu

- Federation of environmental NGO's in Flanders, Belgium
  - Lobby & campaign for a better environment on Flemish, Belgian & international level
  - 140+ member organisations
  - Member of T&E, CANE, EEB

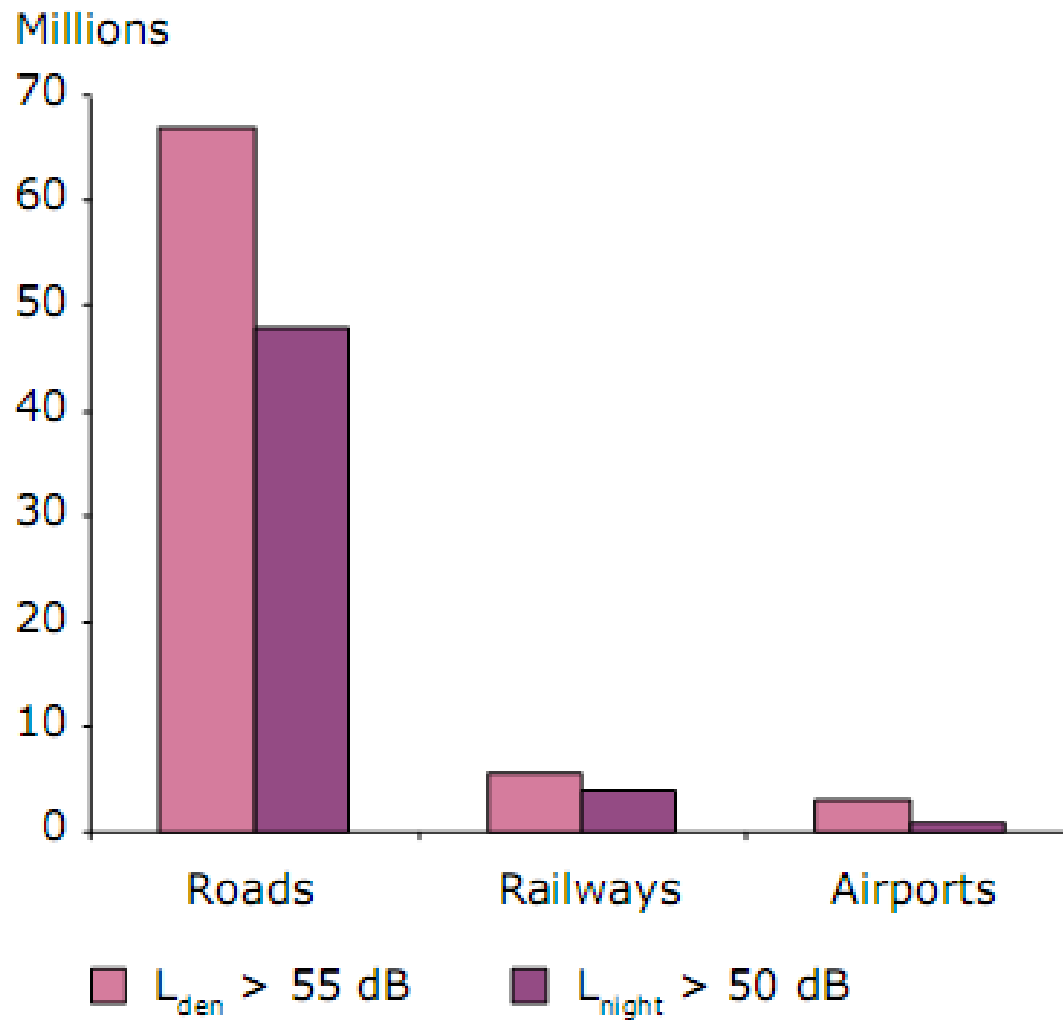


## Transport GHG emissions (*EEA, 2009*)



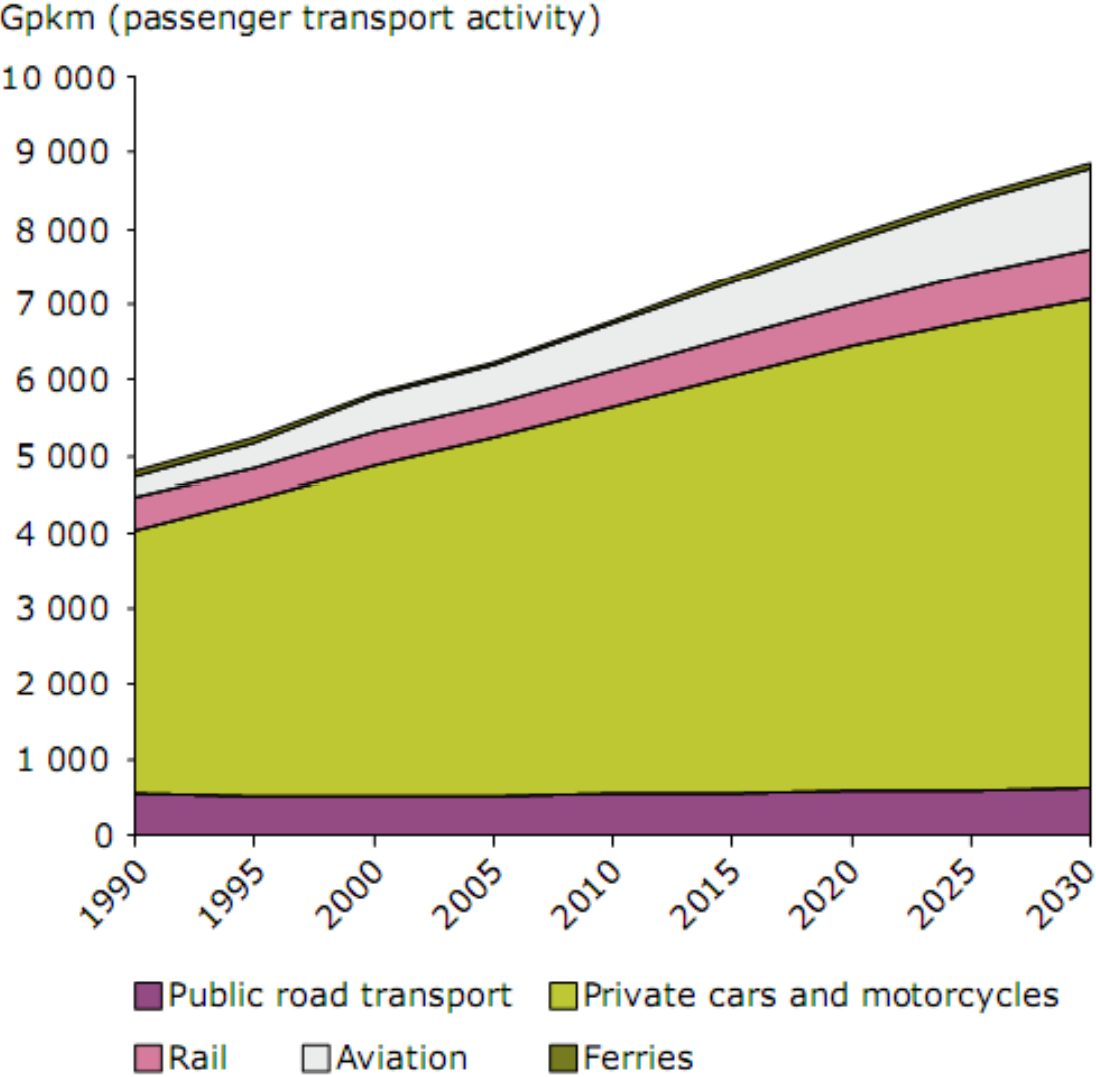


## People affected by transport noise in agglomerations > 250 000 inhabitants (EU-27) (EEA, 2009)





# Projected transport growth (EEA, 2009)





# Policies

- Meet transport needs through sustainable mobility
  - Offer a flexible set of modes, to make optimal choice possible
    - Walk, cycle, public, collective, cars
  - Regulate emissions
  - Use financial instruments
    - Road charging, premiums...
  - Cap irresponsible transport
    - Flights <500 km, Low Emission Zones...

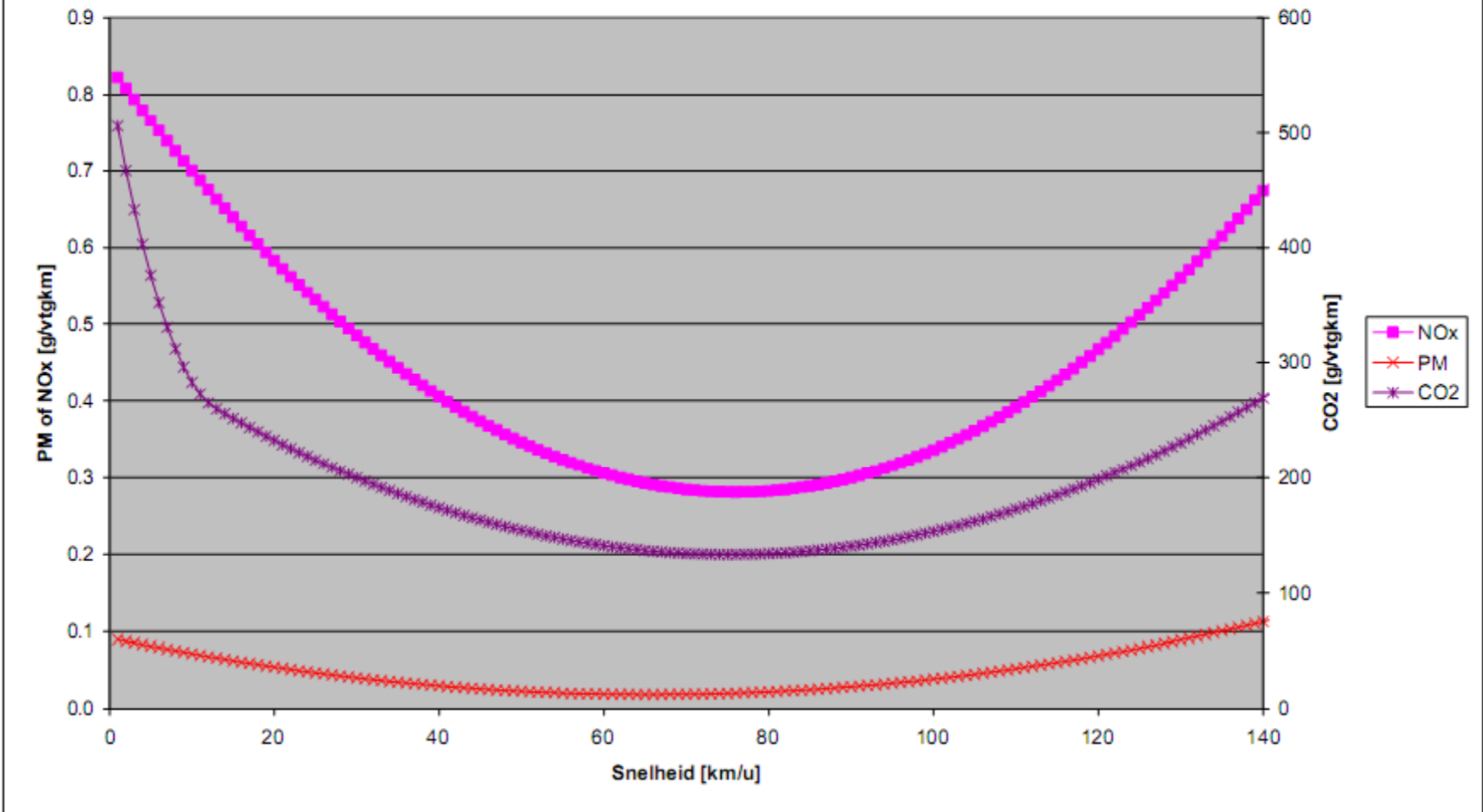


# Speed

- Average speed reduction => emissions
- Engine power reduction => emissions
- Interesting complimentary measure
  - Intelligent Speed Adaptation
  - Ecodriving... is more than speed
    - Traffic flow, anticipation, gear shifting, tyre pressure



### Emissiefactoren personenwagens 2007



Bond Beter Leefmilieu, Koepel  
van Vlaamse milieuverenigingen



# Speed reduction on highways

- Simulation for Belgium of speed limit **on highways of 100 km/h** instead of 120 km/h (*TML, 2009*)
  - 44% less deaths (# 68 in 2007)
  - 27% less severely wounded
  - 33% less PM-emissions
  - 12% less CO<sub>2</sub>-emissions
- Amsterdam ring road at 80 km/h
  - 7% less PM<sub>10</sub> concentration



- BBL test project (2006) ([www.eco-driving.be](http://www.eco-driving.be))
  - 2 car fleets, 5 truck fleets
- Training of drivers => -5-30% fuel use
- Long term effect
  - -5-7% in trucks
  - -10% in cars
- Reduction in costs, accidents
- Key factors
  - Individual training => **driving permit**
  - Monitoring (permanent)
  - Appliances help



# Ecodriving

- EU 3y “Ecodriven” project
  - Builds on Treatise experience
  - Provide local actors with
    - ready-to-hand and tailor-made ecodriving activities
    - a network of local collaborations
    - a campaign that spans Europe
  - Aimed at drivers of passenger cars, buses, trucks, delivery vans
  - Expected results
    - Reach at least 2,500,000 drivers
    - Until 2010, avoid 0.5 Mtons of CO2 emissions
    - Establish European-wide network
      - local and regional collaborations between local actors, relevant local departments and outlets of national and international companies and organisations like Ford, BP, the FIA and Profile International.

# Ecodriven participants

	<b>Participant name</b>	<b>Country</b>
1	SenterNovem	NL
2	Energy Saving Trust	UK
3	Motiva Oy	FI
4	Austrian Energy Agency	AT
5	Centre for Renewable Energy Sources	GR
6	Bond Beter Leefmilieu	BE
7	Krajowa Agencja Poszanowania Energii	PL
8	Stredisko pro efektivi vyuzivani energie	CZ
9	Regie Autonome des transports parisiens	FR

Bond Beter Leefmilieu, Koepel  
van Vlaamse milieuverenigingen



# 10 tips

Shift to a higher gear in time

Drive at a constant speed

Follow the traffic flow and anticipate

Leave the gas when approaching a stop

Brake with the engine

Keep the tyre pressure optimal

Make sensible use of on board appliances

Avoid unnecessary weight

Turn of the engine, even at short stops

Monitor your fuel use



# CO2 & EU automobile sector

- Other measures
  - Inclusion of light-duty commercial vehicles (vans)
  - Mandatory fitting of intelligent speed adaptation (ISA) systems to ensure cars do not go faster than 150 km/h
  - mandatory fitting of gear shift indicators, 'green' zones on rev counters, and cruise control
  - mandatory fitting of tyre pressure monitoring systems
  - ambitious standards for in-car air conditioning systems; ensure that the regulation offers an incentive to sell cars without air conditioning
  - Ambitious rolling resistance standards and environmental labelling of tyres
  - Standards for low friction lubricants
  - Labelling and advertisement code of conduct



## Zero Emission Vehicle

Bram Claeys, +32 2 282 17 32, bram.claeys@bblv.be, <http://www.bblv.be>

Bond Beter Leefmilieu, Koepel  
van Vlaamse milieuverenigingen